

Getting Started

Minimum System Requirements

Door-DrawerCRUNCHER™ Cutlist Software is a Windows-based application program that can be operated on any PC (Windows 2000/XP/Vista/Win 7 Operating System) that has Microsoft Excel 2002 or later versions installed.

Note: Microsoft Excel 2010 must be 32-bit (Door-DrawerCRUNCHER will not operate on the Excel 2010 64-bit version).

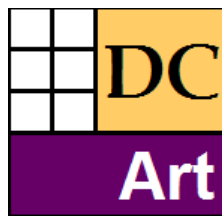
Door-DrawerCRUNCHER can also be run on a Macintosh computer if it is capable of operating in a Windows environment. The Macintosh computer must have a Windows enabling program installed such as Boot Camp, Oracle VirtualBox or similar. The Macintosh computer must also have a Windows-based version of Microsoft Excel that is installed on the "Windows" side.

NOTE: Microsoft®, Microsoft Excel™ and other names of Microsoft® products referenced herein are trademarks or registered trademarks of Microsoft Corporation®.

Launching the Program

To start Door-DrawerCRUNCHER, click the icon. When you download the trial version file, you can save the trial file anywhere on your computer. The registered versions will be installed using a program "set-up" file on your Program Files directory.

The icon for the "Professional" version is on the left, the "Artisan" version is on the right.



Choosing your Default Settings

- When you start Door-DrawerCRUNCHER, the program will always open to a program default screen as shown below.
- Use the buttons on this page to select your default settings as follows:

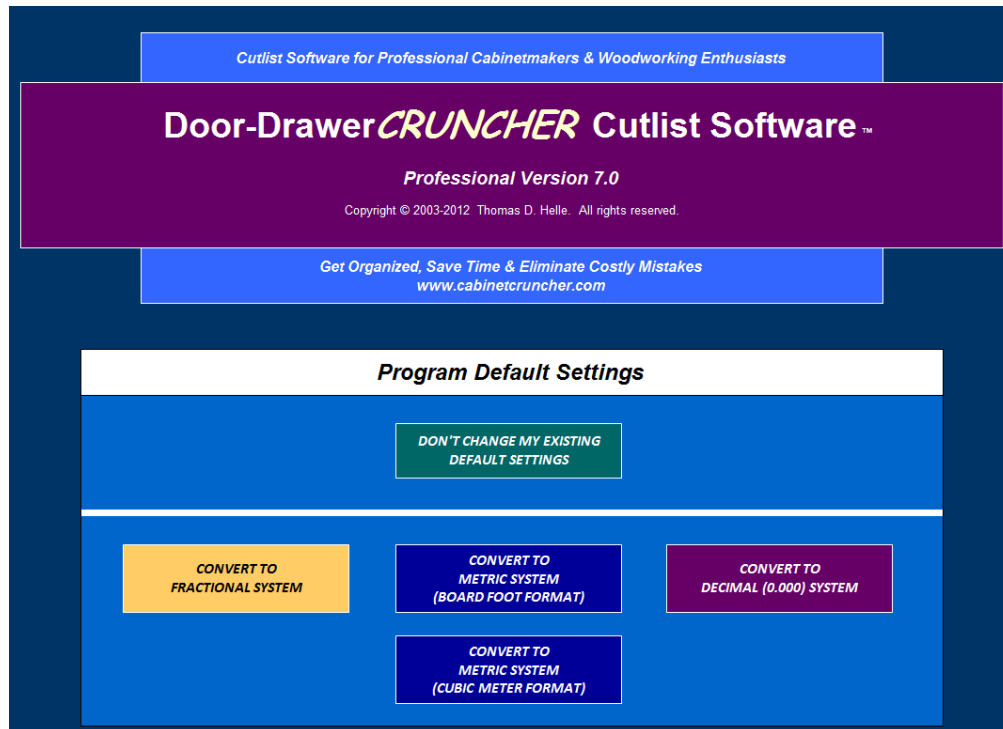
FRACTIONAL - All dimensions will be in inches. Hardwood quantities will be calculated in board feet. Plywood quantities will be calculated in square feet/sheets.

METRIC (Board Foot Format) - All dimensions will be in millimeters. Hardwood quantities will be calculated in board feet. Plywood quantities will be calculated in square feet/sheets.

METRIC (Cubic Meter Format) - All dimensions will be in millimeters. Hardwood quantities will be calculated in cubic meters/centimeters. Plywood quantities will be calculated in square meters/sheets.

DECIMAL - All dimensions will be in inches but they will be expressed as decimals (0.000). Hardwood quantities will be calculated in board feet. Plywood quantities will be calculated in square feet/sheets.

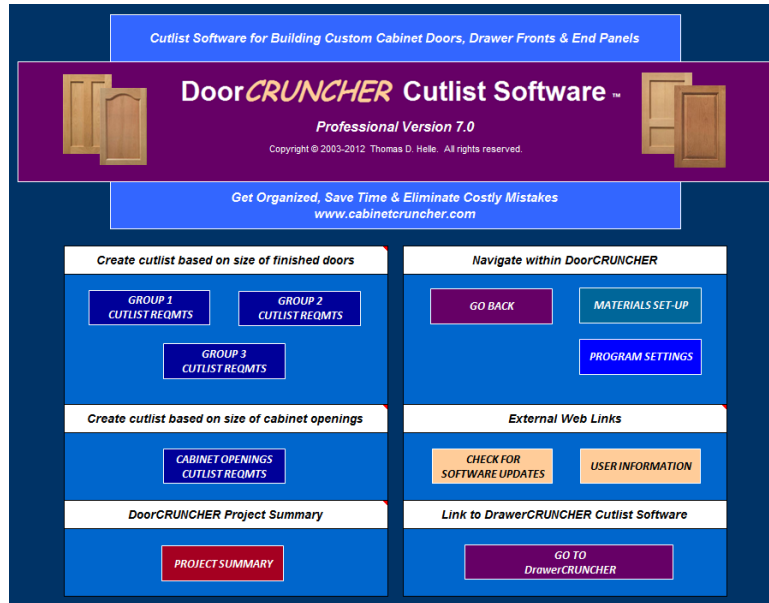
- If you have already opened the program and have previously set your default settings, you can keep your settings and proceed directly to the program by clicking the “**DON'T CHANGE MY DEFAULT SETTINGS**” button.



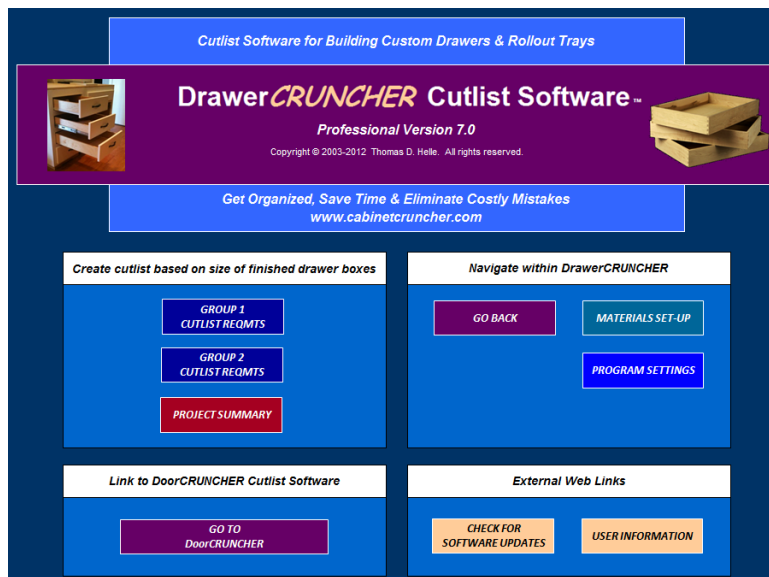
Default Settings Screen

Navigating Links

- After you select your default settings, the program will open the DoorCRUNCHER menu screen as shown below.
- Click the buttons to navigate within Door-DrawerCRUNCHER.
- To open DrawerCRUNCHER, click the “Go to DrawerCRUNCHER” button.
- Within DoorCRUNCHER and DrawerCRUNCHER, click the buttons at the top of the screens to navigate to different screens.



DoorCRUNCHER Menu Screen



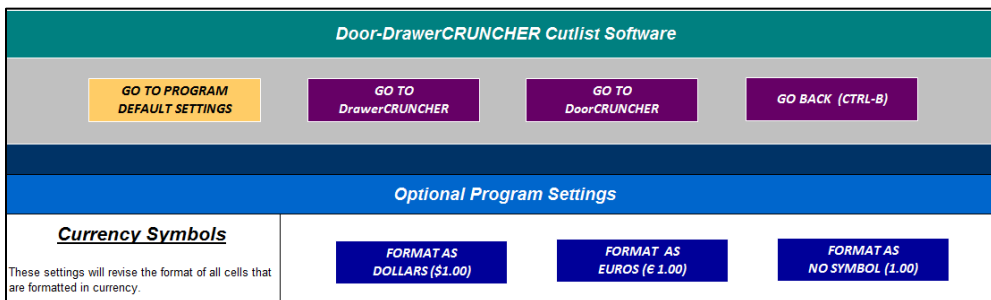
DrawerCRUNCHER Menu Screen

Adjusting the Screen Size

- You can zoom in or out to optimize the viewing size on your computer monitor. The easiest way to adjust the viewing size is to hold the CTRL key down on your keyboard and use the scroll wheel on your mouse. You can also use Excel's toolbar: select VIEW and ZOOM, or you can select VIEW and then select FORMATTING. This will provide a zooming box on your toolbar where you can specify the viewing size.

Adjusting the Program Settings

- To change the default settings, go to the DoorCRUNCHER or DrawerCRUNCHER Menu screen and click the "Program Settings" button.
- You can change the currency symbols by clicking the buttons under "Optional Program Settings" (this setting is limited to Pro version only).
- If you want to change the "default settings" that you selected when the program opened, click the "Go to Program Default Settings" button.
- When you save the program, the changes that you made to these settings will remain until you change them again in the future.



Adjusting the Cutlist Settings

- Customize your cutlist settings by entering data in the YELLOW highlighted cells.
IMPORTANT: See the User Guide for detailed instructions on each cutlist setting.
- Some of the cells have small red triangles in the upper right-hand corner (see example below). These cells have comments with explanations that will help you. On the cells with the red triangles, simply position your cursor over these cells and read the comments.

Cutlist Settings			Notes
Materials	Thickness	Type	
Stiles & Rails	3/4	Cherry	
Center Panels	1/4	Cherry Ply	
Solid Panel Doors, Fronts, Panels	3/4	Cherry	
Stiles		Width	
Width of Stiles		3	
Rails		Width	
Width of Upper Rail		2	
Width of Lower Rail		2	
Tenons & Dados			
Length of tenon in rails (and mullions if applicable)		3/8	If a tenon will be used on the rails (and the center stiles/mullions if they are applicable), enter the tenon length.
Depth of dado in stiles/rails for center panels		3/8	
Center Panels			
Expansion space for panel width		1/8	If the rails (and the center stiles/mullions if they are applicable) will not require a tenon, set the value to 0.
Expansion space for panel height		1/8	
Cathedral Settings			
Distance from bottom edge of top rail to apex of upper arch		0	
Distance from top edge of bottom rail to apex of lower arch		0	

- Some of the cells have drop-down lists (see example below). Click the cell and then select a choice from the drop-down list.

Group 1 - List of Doors, Drawer Fronts & End Panels					
PANEL ID	TYPE	WIDTH	HEIGHT	QTY	CONSTRUCTION TYPE
1	Door	20	24	1	COPE & STICK

Warnings and Cautions

- Door-DrawerCRUNCHER contains certain cells that will appear in RED or ORANGE.
- The RED cells are "Warnings" that alert you if there is an error in your settings. Whenever you see a RED cell, read the instructional comment window and change your settings.
- The ORANGE cells are "Cautions" that alert you to check and verify your cutlist settings. The ORANGE cells do not indicate errors but whenever you see an ORANGE cell, read the comment box in the cell and verify that the settings you made were intended and are acceptable.

Cutlist Settings			Notes
Materials	Thickness	Type	
Stiles & Rails	3/4	Cherry	
Center Panels	1/4	Cherry Ply	
Solid Panel Doors, Fronts, Panels	3/4	Cherry	
Stiles		Width	
Width of Stiles		3	
Rails		Width	
Width of Mitered Rails		2	
Tenons & Dados			
Depth of dado in stiles/rails for center panels		3/8	
Center Panels			
Expansion space for panel width		1/8	
Expansion space for panel height		1/8	

Enter the finished width of mitered rails.

IMPORTANT: If this cell is red, you must change the width of the "mitered rails" to equal the width of the "stiles" in Cell F23.

Using Excel Sorting and Filtering Capability

Whenever you see arrows in the column data (see example below), you can sort and filter the list data based on your preferences.

After you have filtered and sorted the data, you can print the lists to help you organize your project and be very productive in the shop.

EXAMPLE: After you have created a cultist for your entire project, let's say that you want a list of just the door panels on your project that uses 1/4 inch thick cherry plywood. In this case, you would click the filter arrow under "Material Type" and select "Cherry Ply". Then click the filter arrow under "Material Thickness" and select "1/4".

In this example, if desired, you can also organize this list by showing the 1/4 inch thick cherry ply panels in order of width. Let's say you want the list sorted starting with the widest panels and ending with the narrowest panels (largest to smallest). In this case, use the filter under "Width" and select "largest to smallest".

Door Cutlist for Project: Example							
COMPONENT ID	COMPONENT NAME	WIDTH	LENGTH (HEIGHT)	QTY	MATERIAL THICK	MATERIAL TYPE	
1-1	Stiles	2	24	4	3/4	Cherry	
1-2	Upper Rail	2	16 3/4	2	3/4	Cherry	
1-3	Lower Rail	2	16 3/4	2	3/4	Cherry	
1-4	Panel	16 5/8	20 5/8	2	1/4	Cherry Ply	
2-1	Stiles	2	6	2	3/4	Cherry	
2-2	Upper Rail	2	16 3/4	1	3/4	Cherry	
2-3	Lower Rail	2	16 3/4	1	3/4	Cherry	
2-4	Panel	16 5/8	2 5/8	1	1/4	Cherry Ply	
3-1	Stiles	2	24	4	3/4	Cherry	
3-1	Stiles	2 1/2	24	4	3/4	Cherry	
3-2	Upper Rail	2	18 3/4	2	3/4	Cherry	

Once you are finished sorting your list, you can print it out by clicking the "**Print this Sheet**" button.

Panel Quantity					
Item	Group 1	Group 2	Group 3	Cab Openings	Total
Doors	4	2	0	0	6
False Doors	0	0	0	0	0
Drawer Fronts	1	0	0	0	1
False Drawer Panels	0	0	0	0	0
Applied End Panels	1	2	0	0	3

Hot Keys

"Hot Keys" are keyboard shortcuts that can save time. The following Hot Keys are available:

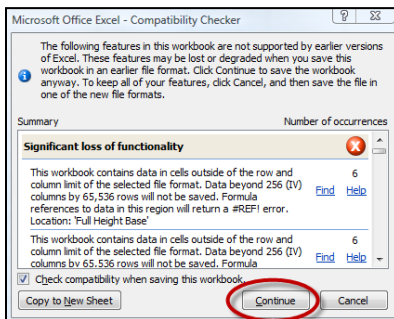
- **Go Back (CTRL- B):** Hold the CTRL button down on your keyboard and type the letter B. This will send you back to the prior screen that you viewed.
- **Go to Top (CTRL-T):** Hold the CTRL button down on your keyboard and type the letter T. This will move you to the top of the screen that you are currently viewing.
- **Save (CTRL-S):** Hold the CTRL button down on your keyboard and type the letter S. This will save the program with all your settings.
- **Resize Comment Window (CTRL-Y):** Sometimes the comment windows may get too small to see the entire text. This will restore the size of the comment window so that you can see all the text. Hold the CTRL button down on your keyboard and type the letter Y.

Saving your Data (File saving is not active in Trial Version)

All your settings and changes can be saved at any time as follows:

- Click the SAVE icon on your Excel toolbar.
- Clicking the round "Office" button in the upper left hand corner of your screen and then select SAVE.
- Use the hotkey CTRL-S.

NOTE: When you save the program, a "Compatibility Checker" window will appear. Click "Continue", and the program will finish saving the program. Disregard the notes in the "Compatibility Checker" regarding "Significant loss of functionality". This does not have any impact on Door-DrawerCRUNCHER.

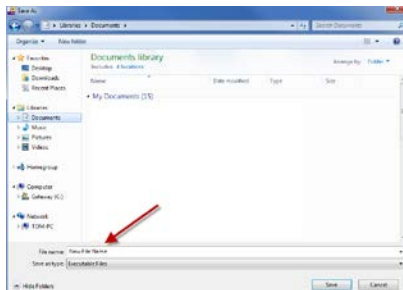


"Save As"

If you are working on a project and want to save it with your own file name, you can create a copy of Door-DrawerCRUNCHER as follows:

- On the Excel toolbar, click "File", or if you have an Excel Office button in the upper left hand corner of your screen, click the button and select "Save As".
- Change the "File Name" and directory location where you want to save your new file.
- You can save a copy of the program anywhere on your C: Hard Disk Drive.

NOTE: The program file you saved will only operate on your computer. The file will not operate on any other computer.



Using DoorCRUNCHER

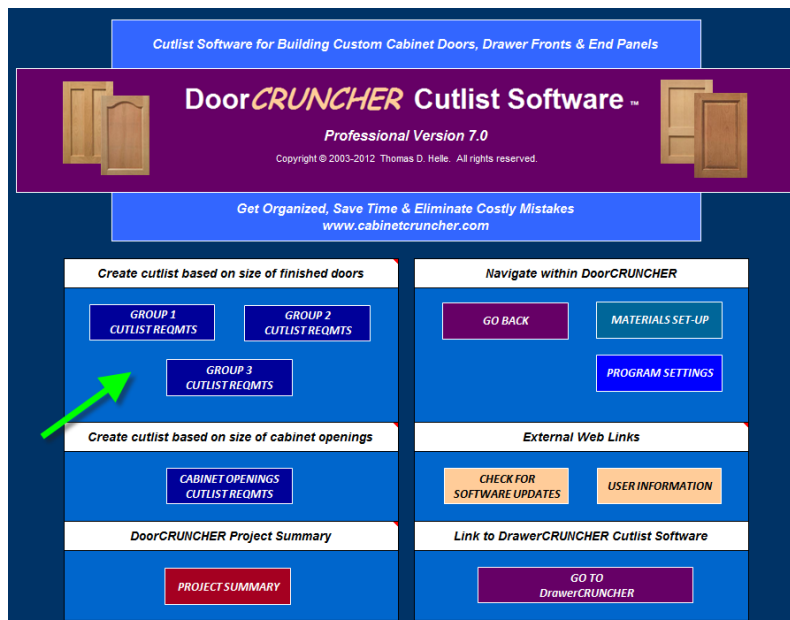
DoorCRUNCHER will enable you to create cutlists based on the following criteria:

1. You already know the finished size of the doors, drawer fronts and end panels.
2. You know the size of the cabinet opening but you don't know the size of the finished doors or drawer fronts.

Option 1: Create cutlist based on known size of finished doors

DoorCRUNCHER is designed using a series of "Groups". These groups - Group 1, Group 2 and Group 3 - enable you the flexibility to create "groups" of doors/panels based on different cutlist requirements.

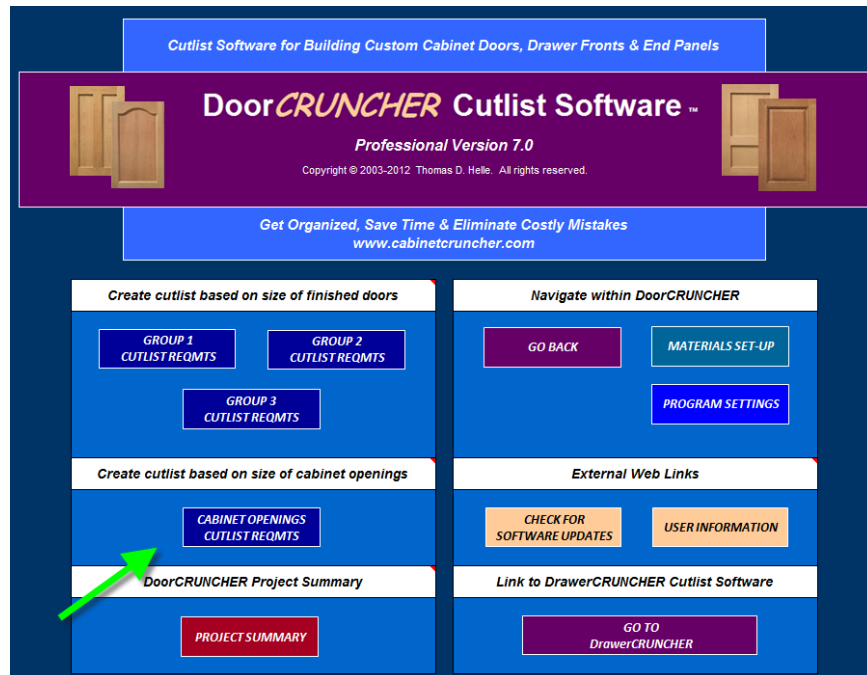
For example, let's say you are building a set of doors for a kitchen. The upper wall cabinets will utilize arched "cathedral" style doors. The doors for the lower base cabinets will be a standard raised panel cope & stick construction. In this case, you would use "Group 1" to create a cutlist for all the upper cathedral doors, and "Group 2" for the lower raised panel doors. The cutlist specifications for each of these groups are managed separately on the "Group 1" and "Group 2" worksheets.

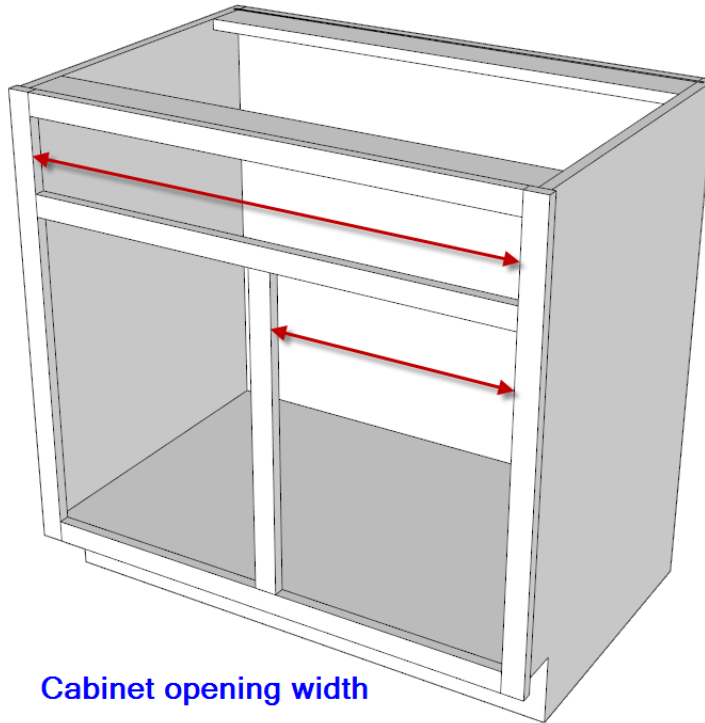


Option 2: Create cutlist based on known size of cabinet opening

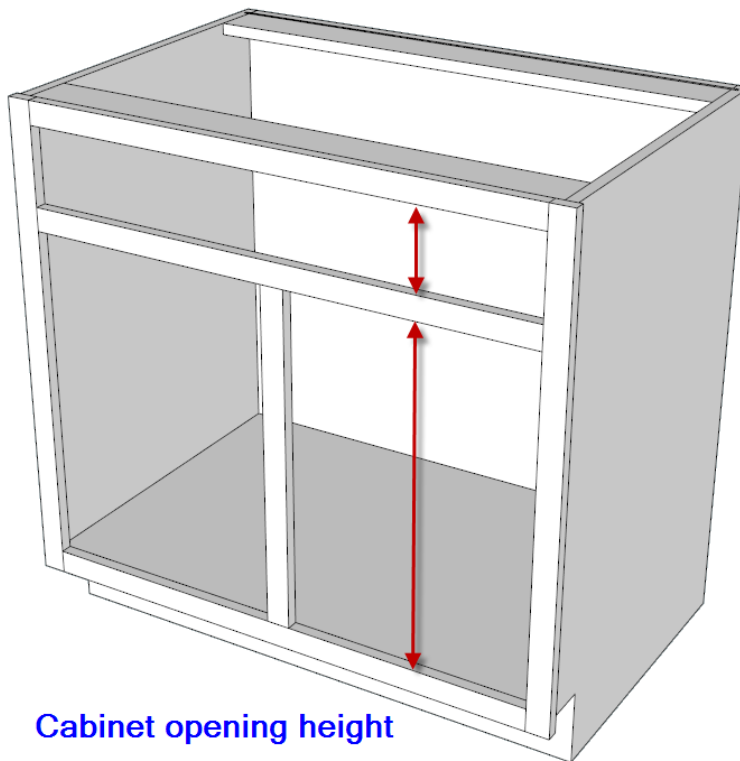
In some cases, you know the size of the cabinet openings but you have not established the final size of the finished doors/panels.

In this case, you would use the “Cabinet Opening Cutlist Requirements” worksheet. On this worksheet, you will enter the size of the cabinet openings, and specify the door overlay/inset requirements, and the program will automatically calculate the doors sizes and corresponding cutlists.





Cabinet opening width



Cabinet opening height

Creating a Cutlist

1. If you want to create your cutlist based on known size of finished doors:

From the DoorCRUNCHER menu screen, select “Group 1” and scroll down to the section titled, “List of Doors, Drawer Fronts & End Panels”. Use this list to identify all the doors, drawer fronts and end panels for this group.

Group 1 - List of Doors, Drawer Fronts & End Panels						
PANEL ID	TYPE	WIDTH	HEIGHT	QTY	CONSTRUCTION TYPE	NOTES
1	Door	20	24	1	COPE & STICK	
2	Drawer Front	20	6	1	SOLID PANEL	
3	Door	22	24	2	COPE & STICK	
4	Drawer Front	22	6	1	SOLID PANEL	

2. Enter data on this list as follows:

- **Panel ID:** For each item in this column, enter a desired reference number (Example: 1, 2, 3, etc.).
- **Type:** For each item in this column, use the drop-down list to select a type of door/panel.
- **Width:** For each item in this column, enter a finished door/panel width.
- **Height:** For each item in this column, enter a finished door/panel height.
- **Quantity:** For each item in this column, enter a quantity.
- **Construction Type:** For each item in this column, use the drop-down list to select the type of construction that you will use.
- **Notes:** Notes are optional.

3. Scroll up to the top of the worksheet and enter your cutlist settings.

A detailed explanation of each cutlist setting is provided in the User Guide.

Cutlist Settings			Notes
Materials			
Stiles & Rails	Thickness	Type	
	3/4	Cherry	
Center Panels	1/4	Cherry Ply	
Solid Panel Doors, Fronts, Panels	3/4	Cherry	
Stiles			
Width of Stiles		Width	
		3	
Rails			
Width of Upper Rail		Width	
		2	
Width of Lower Rail		Width	
		2	
Tenons & Dados			
Length of tenon in rails (and mullions if applicable)		3/8	
Depth of dado in stiles/rails for center panels		3/8	
Center Panels			
Expansion space for panel width		1/8	
Expansion space for panel height		1/8	
Cathedral Settings			
Distance from bottom edge of top rail to apex of upper arch		0	
Distance from top edge of bottom rail to apex of lower arch		0	

4. When you are finished with your cutlist settings, click the “Create Cutlist” button.

Group 1 Cutlist Requirements

CREATE CUTLIST
GROUP 2 CUTLIST REQMTS
PRINT THIS SHEET
RETURN TO MENU

PROJECT SUMMARY
GROUP 3 CUTLIST REQMTS
MATERIALS SET-UP
GO BACK (CTRL-B)

CABINET OPENINGS CUTLIST REQMTS

Group 1 Cutlist Requirements

Project Name:

Project Number:

DoorCRUNCHER Cutlist Software
 Copyright © 2003-2012 Thomas D. Helle. All rights reserved.
www.cabinetcruncher.com

Cutlist Settings			Notes
Materials	Thickness	Type	
Stiles & Rails	3/4	Cherry	
Center Panels	1/4	Cherry Ply	
Solid Panel Doors, Fronts, Panels	3/4	Cherry	
Stiles		Width	
Width of Stiles		3	
Rails		Width	
Width of Upper Rail		2	
Width of Lower Rail		2	

5. Your cutlist and materials will be automatically generated on the Project Summary sheet. If you need to make a change to your cutlist settings, go back to the “Group 1” worksheet and change your settings and re-click the “Create Cutlist” button. This will re-compile the data on the Project Summary.

Project Information

Project Name: Example

Project Number: 123

DoorCRUNCHER Cutlist Software
 Copyright © 2003-2012 Thomas D. Helle. All rights reserved.
www.cabinetcruncher.com

Panel Quantity					
Item	Group 1	Group 2	Group 3	Cab Openings	Total
Doors	3	0	0	0	3
False Doors	0	0	0	0	0
Drawer Fronts	2	0	0	0	2
False Drawer Panels	0	0	0	0	0
Applied End Panels	0	0	0	0	0

Production (Rip Length) Quantity					
Stiles & Rails	Width	Lineal Ft	Rip Qty	Rip Length	Total
3/4 Cherry	3	12.0	1.2		10
3/4 Cherry	2	8.0	0.8		

List of Materials					
Thick	Type	Bd Ft	Sheets	Cost	Notes
3/4	Cherry	7.0		\$56.03	
1/4	Cherry Ply		0.25	\$14.79	

Project Cost				
Item	Labor		Other Costs	Sub-Total
	Rate	Qty		
Materials				\$70.82
Hardware				\$0.00
Production Labor				\$0.00
Finishing				\$0.00
Delivery				\$0.00
Installation				\$0.00
				\$0.00
				\$0.00
				\$0.00
				\$0.00
Average Cost per Sq Ft:	\$5.70		Total Project Cost:	\$70.82

Notes	

Door Cutlist for Project: Example						
COMPONENT ID	COMPONENT NAME	WIDTH	LENGTH (HEIGHT)	QTY	MATERIAL THICK	MATERIAL TYPE
1-1	Stiles	3	24	2	3/4	Cherry
1-2	Upper Rail	2	14 3/4	1	3/4	Cherry
1-3	Lower Rail	2	14 3/4	1	3/4	Cherry
1-4	Panel	14 5/8	20 5/8	1	1/4	Cherry Ply
2-1	Panel	20	6	1	3/4	Cherry
3-1	Stiles	3	24	4	3/4	Cherry
3-2	Upper Rail	2	16 3/4	2	3/4	Cherry
3-3	Lower Rail	2	16 3/4	2	3/4	Cherry
3-4	Panel	16 5/8	20 5/8	2	1/4	Cherry Ply
4-1	Panel	22	6	1	3/4	Cherry

- If your project requires a second "group" of doors/panels, click the "Group 2" link at the top of the Project Summary worksheet.

DoorCRUNCHER Project Summary

CLEAR
ENTIRE PROJECT

PRINT
THIS SHEET ONLY

GROUP 1
CUTLIST REQMTS

RETURN TO MENU

PRINT
DOOR PROJECT

GROUP 2
CUTLIST REQMTS

GO BACK

GROUP 3
CUTLIST REQMTS

MATERIALS SET-UP

CABINET OPENINGS
CUTLIST REQMTS

PROGRAM SETTINGS

Project Information

Project Name:	Example	DoorCRUNCHER Cutlist Software Copyright © 2003-2012 Thomas D. Halle. All rights reserved. www.cabinetcruncher.com
Project Number:	123	

Panel Quantity

Item	Group 1	Group 2	Group 3	Cab Openings	Total
Doors	3	0	0	0	3
False Doors	0	0	0	0	0
Drawer Fronts	2	0	0	0	2
False Drawer Panels	0	0	0	0	0
Applied End Panels	0	0	0	0	0

Production (Rip Length) Quantity

Stiles & Rails	Width	Lineal Ft	Rip Qty	Rip Length	Total
3/4 Cherry	3	12.0	1.2		10
3/4 Cherry	2	8.0	0.8		

- Repeat steps 1 through 4. Your "Group 2" cutlist requirements will be added to the Project Summary worksheet.

8. If your project requires a third “group” of doors/panels, click the “Group 3” link at the top of the Project Summary worksheet.
9. Repeat steps 1 through 4. Your “Group 3” cutlist requirements will be added to the Project Summary worksheet.
10. [If you want a cutlist that calculates the doors, drawer fronts and end panels based on the size of cabinet openings:](#)

From the DoorCRUNCHER main menu screen, select the “Cabinet Opening Cutlist Requirements” worksheet and scroll down to the “Enter Size of Cabinet Openings” section and enter the cabinet opening requirements as follows:

Enter Size of Cabinet Openings						
REF ID	TYPE	WIDTH	HEIGHT	QTY	CONSTRUCTION TYPE	NOTES
1	Door	36	30	2	COPE & STICK	
2	False Drawer Panel	36	6	1	SOLID PANEL	

- **Ref ID:** For each item in this column, enter a desired reference number for this cabinet opening (Example: 1, 2, 3, etc.).
- **Type:** For each item in this column, use the drop-down list to select a type of door/panel.
- **Width:** For each item in this column, enter the width of the cabinet opening.
- **Height:** For each item in this column, enter the height of the cabinet opening.
- **Quantity:** For each item in this column, use the drop-down list and select either 1 or 2. This is the quantity of doors/panels that will be installed in the cabinet opening. For example, enter 1 if you will install one door in the cabinet opening; enter 2 if you will install two doors in the cabinet opening.
- **Construction Type:** For each item in this column, use the drop-down list to select the type of construction that you will use.

Scroll up to the top of the worksheet and enter your cutlist settings, and then click the “Create cutlist” button as described above.

11. If you need to change any of your cutlist requirements on any of the worksheets, simply click the “Create Cutlist” button on any of the sheets again and your project summary sheet will be changed automatically.

NOTE: You can click the “Create Cutlist” button on any of the worksheets. It does not matter which button you select. The program will always re-calculate your cutlist data as an entire package based on the requirements on each of the “Group 1-3” and “Cabinet Opening” worksheets.

Clear/Reset Project

- To remove all project data from the Group 1, Group 2, Group 3 and Project Summary worksheets, go to the Project Summary screen and click the "CLEAR PROJECT" button.

DoorCRUNCHER Project Summary

CLEAR
ENTIRE PROJECT

PRINT
THIS SHEET ONLY

GROUP 1
CUTLIST REQMTS

RETURN TO MENU

PRINT
DOOR PROJECT

GROUP 2
CUTLIST REQMTS

GO BACK

GROUP 3
CUTLIST REQMTS

MATERIALS SET-UP

CABINET OPENINGS
CUTLIST REQMTS

PROGRAM SETTINGS

Project Information

Project Name:		DoorCRUNCHER Cutlist Software Copyright © 2003-2012 Thomas D. Helle. All rights reserved. www.cabinetcruncher.com
Project Number:		

Door/Panel Quantity

Item	Group 1	Group 2	Group 3	Cab Openings	Total
Doors	0	0	0	0	0
False Doors	0	0	0	0	0
Drawer Fronts	0	0	0	0	0
False Drawer Panels	0	0	0	0	0
Applied End Panels	0	0	0	0	0

DoorCRUNCHER Project Summary

Your cutlist and materials will be automatically generated on the Project Summary sheet.

The Project Summary includes the following information:

- Project Information
- Panel Quantity
- Production (Rip Length) Quantity
- List of Materials
- Project Cost (Pro version only)
- Notes
- Project Cutlist

Project Information

- If desired, enter a brief project name.

Project Information					
Project Name:	Example		DoorCRUNCHER Cutlist Software Copyright © 2003-2012 Thomas D. Helle. All rights reserved. www.cabinetcruncher.com		
Project Number:	123				
Panel Quantity					
Item	Group 1	Group 2	Group 3	Cab Openings	Total
Doors	4	2	0	0	6
False Doors	0	0	0	0	0
Drawer Fronts	1	0	0	0	1
False Drawer Panels	0	0	0	0	0
Applied End Panels	0	2	0	0	2
Production (Rip Length) Quantity					
Stiles & Rails	Width	Lineal Ft	Rip Qty	Rip Length	10
3/4 Cherry	2	41.8	4.2		
3/4 Cherry	2 1/2	28.9	2.9		

- If desired, insert a project number.

Project Information					
Project Name:	Example		DoorCRUNCHER Cutlist Software Copyright © 2003-2012 Thomas D. Helle. All rights reserved. www.cabinetcruncher.com		
Project Number:	123				
Panel Quantity					
Item	Group 1	Group 2	Group 3	Cab Openings	Total
Doors	4	2	0	0	6
False Doors	0	0	0	0	0
Drawer Fronts	1	0	0	0	1
False Drawer Panels	0	0	0	0	0
Applied End Panels	0	2	0	0	2
Production (Rip Length) Quantity					
Stiles & Rails	Width	Lineal Ft	Rip Qty	Rip Length	10
3/4 Cherry	2	41.8	4.2		
3/4 Cherry	2 1/2	28.9	2.9		

- Use this row for optional information.

Project Information						
Project Name:	Example				DoorCRUNCHER Cutlist Software Copyright © 2003-2012 Thomas D. Helle. All rights reserved. www.cabinetcruncher.com	
Project Number:	123					
Panel Quantity						
Item	Group 1	Group 2	Group 3	Cab Openings	Total	
Doors	4	2	0	0	6	
False Doors	0	0	0	0	0	
Drawer Fronts	1	0	0	0	1	
False Drawer Panels	0	0	0	0	0	
Applied End Panels	0	2	0	0	2	
Production (Rip Length) Quantity						
Stiles & Rails	Width	Lineal Ft	Rip Qty	Rip Length	10	
3/4 Cherry	2	41.8	4.2			
3/4 Cherry	2 1/2	28.9	2.9			

Panel Quantity

- This section summarizes the quantity of all doors, false doors, drawer fronts, false drawer fronts and applied end panels for your entire project. This information is generated automatically based on the information in “Group 1”, “Group 2”, “Group 3”, and “Cabinet Opening Requirement” worksheets.

Project Information						
Project Name:	Example				DoorCRUNCHER Cutlist Software Copyright © 2003-2012 Thomas D. Helle. All rights reserved. www.cabinetcruncher.com	
Project Number:	123					
Panel Quantity						
Item	Group 1	Group 2	Group 3	Cab Openings	Total	
Doors	4	2	0	0	6	
False Doors	0	0	0	0	0	
Drawer Fronts	1	0	0	0	1	
False Drawer Panels	0	0	0	0	0	
Applied End Panels	0	2	0	0	2	
Production (Rip Length) Quantity						
Stiles & Rails	Width	Lineal Ft	Rip Qty	Rip Length	10	
3/4 Cherry	2	41.8	4.2			
3/4 Cherry	2 1/2	28.9	2.9			

Production (Rip Length) Quantity

- This section summarizes the total lineal length of each width of stile and rail used on your project. This information is intended to help you plan the quantity of “rip lengths”.

EXAMPLE:

In cell H22, enter a rip length in quantity in feet if you are using a “FRACTIONAL” format or meters if you are using a “METRIC” format.

If the total "lineal feet" for a particular material in Cell E23 is 50, and your rip length is set to 10, you will need to cut 5 strips of material at 10 feet long.

If the total "lineal meters" for a particular material in Cell E23 is 30, and your rip length is set to 3, you will need to cut 10 strips of material at 3 meters long.

Project Information					
Project Name:	Example		DoorCRUNCHER Cutlist Software Copyright © 2003-2012 Thomas D. Helle. All rights reserved. www.cabinetcruncher.com		
Project Number:	123				
Panel Quantity					
Item	Group 1	Group 2	Group 3	Cab Openings	Total
Doors	4	2	0	0	6
False Doors	0	0	0	0	0
Drawer Fronts	1	0	0	0	1
False Drawer Panels	0	0	0	0	0
Applied End Panels	0	2	0	0	2
Production (Rip Length) Quantity					
Stiles & Rails	Width	Lineal Ft	Rip Qty	Rip Length	10
3/4 Cherry	2	41.8	4.2		
3/4 Cherry	2 1/2	28.9	2.9		

List of Materials


- This section summarizes the type and quantity of all materials used on your project.

Project Information						
Project Name:	Example				DoorCRUNCHER Cutlist Software Copyright © 2003-2012 Thomas D. Helle. All rights reserved. www.cabinetcruncher.com	
Project Number:	123					
Panel Quantity						
Item	Group 1	Group 2	Group 3	Cab Openings	Total	
Doors	4	2	0	0	6	
False Doors	0	0	0	0	0	
Drawer Fronts	1	0	0	0	1	
False Drawer Panels	0	0	0	0	0	
Applied End Panels	0	2	0	0	2	
Production (Rip Length) Quantity						
Stiles & Rails		Width	Lineal Ft	Rip Qty	Rip Length	10
3/4	Cherry	2	41.8	4.2		
3/4	Cherry	2 1/2	28.9	2.9		
List of Materials						
Thick	Type	Bd Ft	Sheets	Cost	Notes	
3/4	Cherry	15.9		\$127.17		
1/4	Cherry Ply		0.76	\$45.69		

Project Cost

- This section summarizes the total material cost, and provides optional criteria for you to establish other costs associated with the project such as production labor, finishing, delivery, installation, etc. You can change the cost item descriptions and their associated costs based on your preferences.


Project Cost					
Item	Labor		Other Costs		Sub-Total
	Rate	Qty			
Materials					\$172.86
Hardware					\$0.00
Production Labor	\$50.00	8.0			\$400.00
Finishing	\$50.00	8.0			\$400.00
Delivery	\$50.00	2.0			\$100.00
Installation	\$50.00	2.0			\$100.00
					\$0.00
					\$0.00
					\$0.00
					\$0.00
Average Cost per Sq Ft:	\$35.72			Total Project Cost:	\$1,172.86



Notes (Optional)

- This section provides space for project notes.

Project Cost					
Item	Labor		Other Costs		Sub-Total
	Rate	Qty			
Materials					\$172.86
Hardware					\$0.00
Production Labor	\$50.00	8.0			\$400.00
Finishing	\$50.00	8.0			\$400.00
Delivery	\$50.00	2.0			\$100.00
Installation	\$50.00	2.0			\$100.00
					\$0.00
					\$0.00
					\$0.00
					\$0.00
Average Cost per Sq Ft:	\$35.72			Total Project Cost:	\$1,172.86
Notes					



Project Cutlist

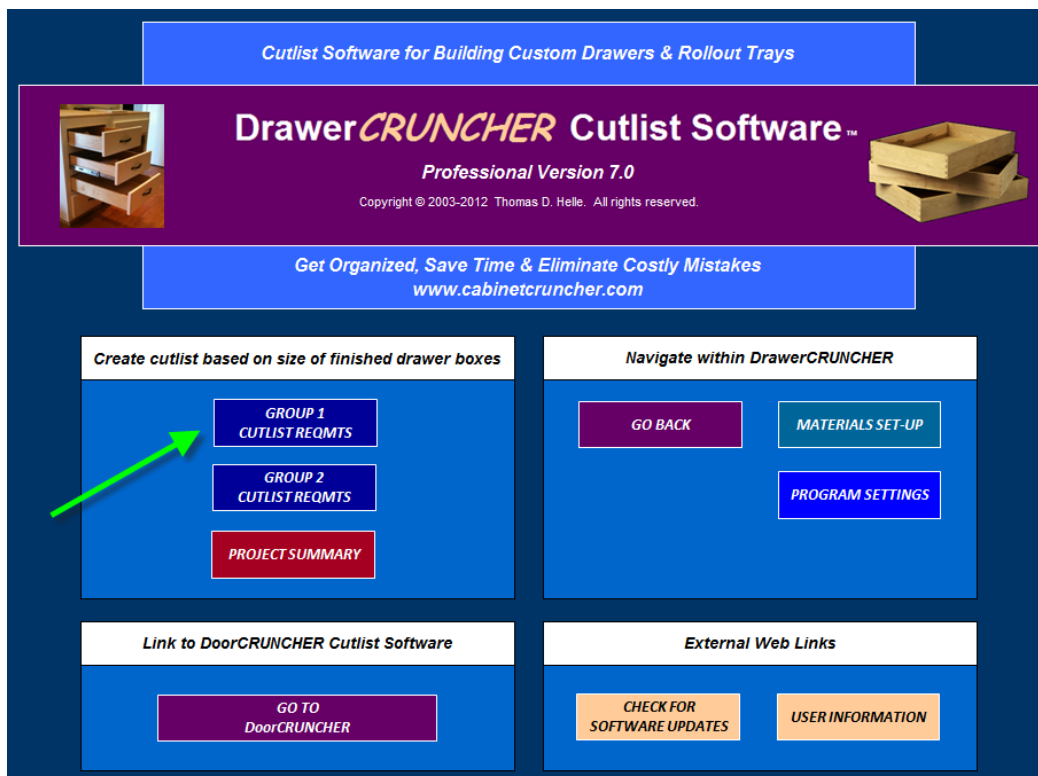
- This section compiles a complete cutlist for all doors, drawer fronts and end panels for your entire project. This data is generated from the “Group 1”, “Group 2”, “Group 3” and “Cabinet Openings” worksheets.
- You can use the filters in each column to sort the components based on your preferences.

Door Cutlist for Project: Example						
COMPONENT ID	COMPONENT NAME	WIDTH	LENGTH (HEIGHT)	QTY	MATERIAL THICK	MATERIAL TYPE
1-1	Stiles	2	24	4	3/4	Cherry
1-2	Upper Rail	2	16 3/4	2	3/4	Cherry
1-3	Lower Rail	2	16 3/4	2	3/4	Cherry
1-4	Center Rail	2	16 3/4	2	3/4	Cherry
1-5	Upper Panel	16 5/8	12 5/8	2	1/4	Cherry Ply
1-6	Lower Panel	16 5/8	6 5/8	2	1/4	Cherry Ply
2-1	Panel	20	6	1	3/4	Cherry
3-1	Stiles	2	24	4	3/4	Cherry
3-1	Stiles	2 1/2	24	4	3/4	Cherry
3-2	Upper Rail	2	18 3/4	2	3/4	Cherry
3-2	Upper Rail	2	13 3/4	2	3/4	Cherry
3-3	Lower Rail	2	18 3/4	2	3/4	Cherry
3-3	Lower Rail	2	13 3/4	2	3/4	Cherry
3-4	Panel	18 5/8	20 5/8	2	1/4	Cherry Ply
3-4	Center Stile (Mullion)	2 1/2	20 3/4	2	3/4	Cherry
3-5	Panels	5 7/8	20 5/8	4	1/4	Cherry Ply
4-1	Stiles	2 1/2	36	4	3/4	Cherry
4-2	Upper Rail	2	19 3/4	2	3/4	Cherry
4-3	Lower Rail	2	19 3/4	2	3/4	Cherry
4-4	Center Stile (Mullion)	2 1/2	32 3/4	2	3/4	Cherry
4-5	Panels	8 7/8	32 5/8	4	1/4	Cherry Ply

Using DrawerCRUNCHER

Process for Creating a Cutlist

1. From the DrawerCRUNCHER menu screen, click the “Group 1 Cutlist Requirements” button.



DrawerCRUNCHER Menu Screen

2. Scroll down to the “Enter List of Drawer Boxes & Roll-Out Trays” section. Use this list to identify the finished size of all drawer boxes and roll-out trays for your entire project. You can use the filters to sort these items based on your preferences.

List of Drawer Boxes & Roll-Out Trays						
DRAWER ID	TYPE	WIDTH	DEPTH	HEIGHT	QUANTITY	NOTES
1	DRAWER BOX	20	22	6	4	
2	ROLL-OUT TRAY	20	22	3	2	
3	DRAWER BOX	22 1/2	22	8 1/2	2	

Enter data on your list as follows:

- **Drawer ID:** For each item in this column, enter a desired reference number (Example: 1, 2, 3, etc.).
- **Type:** For each item in this column, use the drop-down list to select either “DRAWER BOX” or “ROLL-OUT TRAY”.
- **Width:** For each item in this column, enter a finished width.
- **Depth:** For each item in this column, enter a finished depth.
- **Height:** For each item in this column, enter a finished height.
- **Quantity:** For each item in this column, enter a quantity.
- **Notes:** Notes are optional.

3. Scroll up to the top of the worksheet and enter your cutlist settings.

A detailed explanation of each cutlist setting is provided in the User Guide.

Cutlist Settings			Notes
Materials			
	Thickness	Type	
Front Panel	1/2	Russian Birch	
Side & Back Panels	1/2	Russian Birch	
Bottom Panel	1/4	Russian Birch	
Jointery Options			
Front-to-Side Joints		DADO & RABBET	
Side-to-Back Joints		DADO	
Bottom Panel			
Drawer Bottom Installation		FULLY ENCLOSED	
Depth of dado for bottom panel		1/4	
Location of dado for bottom panel		1/4	
Clearance space within dado for bottom panel		1/16	
Front Panel			
Back Panel			
Side Panels			
Depth of dado in side panels to accept front panel		1/4	
Depth of dado in side panels to accept back panel		1/4	
Location of dado from end of side panels to accept back panel		1/2	

4. When you are finished with your cutlist settings, click the “Create Cutlist” button.

Drawer Group 1 Cutlist Requirements

CREATE CUTLIST

GROUP 2 CUTLIST REQMTS

PRINT THIS SHEET

RETURN TO MENU

PROJECT SUMMARY

MATERIALS SET-UP

GO BACK (CTRL-B)

Group 1 Cutlist Requirements for Drawer Boxes & Roll-Out Trays

Project Name:

Project Number:

DrawerCRUNCHER Cutlist Software

Copyright © 2003-2012 Thomas D. Helle. All rights reserved.
www.cabinetcruncher.com

Cutlist Settings			Notes
Materials	Thickness	Type	
Front Panel	1/2	Russian Birch	
Side & Back Panels	1/2	Russian Birch	
Bottom Panel	1/4	Russian Birch	

5. Your cutlist and materials will be automatically generated on the Project Summary sheet.

DrawerCRUNCHER Project Summary

CLEAR PROJECT

PRINT THIS SHEET ONLY

MATERIALS SET-UP

RETURN TO MENU

GROUP 1 CUTLIST REQMTS

PRINT DRAWER PROJECT

PROGRAM SETTINGS

GO BACK

GROUP 2 CUTLIST REQMTS

Project Information

Project Name:

Project Number:

DrawerCRUNCHER Cutlist Software

Copyright © 2003-2012 Thomas D. Helle. All rights reserved.
www.cabinetcruncher.com

Quantity of Drawer Boxes & Roll-Out Trays

Item				Total Qty
Drawer Boxes				1
Roll-Out Trays				1

Production (Rip Length) Quantity

Front, Side and Back Panels	Panel Width	Lineal Ft	Rip Qty	Rip Length	8
1/2 Russian Birch	6	5.3	0.7		
1/2 Russian Birch	5 1/2	1.7	0.2		
1/2 Russian Birch	4	5.3	0.7		
1/2 Russian Birch	3 1/2	1.7	0.2		

List of Materials					
Thick	Type	Bd Ft	Sheets	Cost	Notes
1/2	Russian Birch		1.27	\$50.93	
1/4	Russian Birch		1.07	\$32.20	

Project Cost				
Item	Labor		Other Costs	Sub-Total
	Rate	Qty		
Materials				\$83.14
Hardware				\$0.00
Production Labor				\$0.00
Finishing				\$0.00
Delivery				\$0.00
Installation				\$0.00
				\$0.00
				\$0.00
				\$0.00
				\$0.00
Average Cost per Sq Ft:	\$3.30		Total Project Cost:	\$83.14

Notes	

Project Cutlist						
COMPONENT ID	COMPONENT NAME	WIDTH	LENGTH (HEIGHT)	QTY	MATERIAL THICK	MATERIAL TYPE
1-1	Front Panel	6	19 1/2	4	1/2	Russian Birch
1-2	Back Panel	6	19 1/2	4	1/2	Russian Birch
1-3	Side Panels	6	22	8	1/2	Russian Birch
1-4	Bottom Panel	19 7/16	20 15/16	4	1/4	Russian Birch
2-1	Front Panel	3	19 1/2	2	1/2	Russian Birch
2-2	Back Panel	3	19 1/2	2	1/2	Russian Birch

6. If your project requires a second “group” of drawer boxes/trays, click the “Group 2” link at the top of the Project Summary worksheet.

DrawerCRUNCHER Project Summary		
CLEAR PROJECT	PRINT THIS SHEET ONLY	MATERIALS SET-UP
GROUP 1 CUTLIST REQMTS	PRINT DRAWER PROJECT	PROGRAM SETTINGS
GROUP 2 CUTLIST REQMTS		GO BACK
Project Information		
Project Name:		DrawerCRUNCHER Cutlist Software
Project Number:		Copyright © 2003-2012 Thomas D. Helle. All rights reserved. www.cabinetcruncher.com
Quantity of Drawer Boxes & Roll-Out Trays		
Item		Total Qty
Drawer Boxes		1
Roll-Out Trays		1
Production (Rip Length) Quantity		
Front, Side and Back Panels	Panel Width	Lineal Ft
1/2 Russian Birch	6	5.3
1/2 Russian Birch	5 1/2	1.7
1/2 Russian Birch	4	5.3
1/2 Russian Birch	3 1/2	1.7
	Rip Qty	Rip Length
		8

7. Repeat steps 1 through 4. Your "Group 2" cutlist requirements will be added to the Project Summary worksheet.

8. If you need to change any of your cutlist requirements on any of the worksheets, simply click the "Create Cutlist" button again and your project summary sheet will be updated automatically.

Clear/Reset Project

1. To remove all project data from the Group 1, Group 2 and Project Summary worksheets, go to the Project Summary screen and click the "CLEAR PROJECT" button.

DrawerCRUNCHER Project Summary

CLEAR PROJECT

PRINT
THIS SHEET ONLY

MATERIALS SET-UP

RETURN TO MENU

GROUP 1
CUTLIST REQMTS

PRINT
DRAWER PROJECT

PROGRAM SETTINGS

GO BACK

GROUP 2
CUTLIST REQMTS

Project Information

Project Name:		DrawerCRUNCHER Cutlist Software
Project Number:		Copyright © 2003-2012 Thomas D. Helle. All rights reserved. www.cabinetcruncher.com

Quantity of Drawer Boxes & Roll-Out Trays

Item					Total Qty
Drawer Boxes					1
Roll-Out Trays					1

Production (Rip Length) Quantity

Front, Side and Back Panels	Panel Width	Lineal Ft	Rip Qty	Rip Length	
1/2 Russian Birch	6	5.3	0.7		8
1/2 Russian Birch	5 1/2	1.7	0.2		
1/2 Russian Birch	4	5.3	0.7		
1/2 Russian Birch	3 1/2	1.7	0.2		

DrawerCRUNCHER Project Summary

Your cutlist and materials will be automatically generated on the Project Summary sheet.

The Project Summary includes the following information:

- Project Information
- Quantity of Drawer Boxes and Roll-Out Trays
- Production (Rip Length) Quantity
- List of Materials
- Project Cost (Pro version only)
- Notes
- Project Cutlist

Project Information

- If desired, enter a brief project name.

Project Information					
Project Name:	Example				DrawerCRUNCHER Cutlist Software Copyright © 2003-2012 Thomas D. Helle. All rights reserved. www.cabinetcruncher.com
Project Number:	123				
Quantity of Drawer Boxes & Roll-Out Trays					
Item					Total Qty
Drawer Boxes					6
Roll-Out Trays					2
Production (Rip Length) Quantity					
Front, Side and Back Panels	Panel Width	Lineal Ft	Rip Qty	Rip Length	8
1/2 Russian Birch	6	27 2/3	3.5		
1/2 Russian Birch	3	13 5/6	1.7		
1/2 Russian Birch	8 1/2	14 2/3	1.8		

- If desired, enter a project number.

Project Information					
Project Name:	Example				DrawerCRUNCHER Cutlist Software Copyright © 2003-2012 Thomas D. Helle. All rights reserved. www.cabinetcruncher.com
Project Number:	123				
Quantity of Drawer Boxes & Roll-Out Trays					
Item					Total Qty
Drawer Boxes					6
Roll-Out Trays					2
Production (Rip Length) Quantity					
Front, Side and Back Panels	Panel Width	Lineal Ft	Rip Qty	Rip Length	8
1/2 Russian Birch	6	27 2/3	3.5		
1/2 Russian Birch	3	13 5/6	1.7		
1/2 Russian Birch	8 1/2	14 2/3	1.8		

- Use this row for optional information.

Project Information						
Project Name:	Example				DrawerCRUNCHER Cutlist Software Copyright © 2003-2012 Thomas D. Helle. All rights reserved. www.cabinetcruncher.com	
Project Number:	123					
Quantity of Drawer Boxes & Roll-Out Trays						
Item					Total Qty	
Drawer Boxes					6	
Roll-Out Trays					2	
Production (Rip Length) Quantity						
Front, Side and Back Panels	Panel Width	Lineal Ft	Rip Qty	Rip Length	8	
1/2 Russian Birch	6	27 2/3	3.5			
1/2 Russian Birch	3	13 5/6	1.7			
1/2 Russian Birch	8 1/2	14 2/3	1.8			

Panel Quantity

- This section summarizes the quantity of all drawer boxes and roll-out trays for your entire project. This information is generated automatically based on the information on your cutlist worksheets.

Project Information						
Project Name:	Example				DrawerCRUNCHER Cutlist Software Copyright © 2003-2012 Thomas D. Helle. All rights reserved. www.cabinetcruncher.com	
Project Number:	123					
Quantity of Drawer Boxes & Roll-Out Trays						
Item					Total Qty	
Drawer Boxes					6	
Roll-Out Trays					2	
Production (Rip Length) Quantity						
Front, Side and Back Panels	Panel Width	Lineal Ft	Rip Qty	Rip Length	8	
1/2 Russian Birch	6	27 2/3	3.5			
1/2 Russian Birch	3	13 5/6	1.7			
1/2 Russian Birch	8 1/2	14 2/3	1.8			

Production (Rip Length) Quantity

- This section summarizes the total length of each width of drawer box material used on your project. This information is intended to help you plan the quantity of “rip lengths”

EXAMPLE:

In cell H22, enter a rip length in quantity in feet if you are using a “FRACTIONAL” format or meters if you are using a “METRIC” format.

If the total "lineal feet" for a particular material in Cell E23 is 50, and your rip length is set to 10, you will need to cut 5 strips of material at 10 feet long.

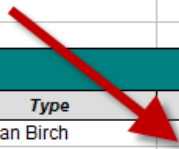
If the total "lineal meters" for a particular material in Cell E23 is 30, and your rip length is set to 3, you will need to cut 10 strips of material at 3 meters long.

Project Information					
Project Name:	Example		DrawerCRUNCHER Cutlist Software Copyright © 2003-2012 Thomas D. Helle. All rights reserved. www.cabinetcruncher.com		
Project Number:	123				
Quantity of Drawer Boxes & Roll-Out Trays					
Item					Total Qty
Drawer Boxes					6
Roll-Out Trays					2
Production (Rip Length) Quantity					
Front, Side and Back Panels	Panel Width	Lineal Ft	Rip Qty	Rip Length	8
1/2 Russian Birch	6	27 2/3	3.5		
1/2 Russian Birch	3	13 5/6	1.7		
1/2 Russian Birch	8 1/2	14 2/3	1.8		

List of Materials

- This section summarizes the type and quantity of all materials used on your project.

Project Information						
Project Name:	Example			DrawerCRUNCHER Cutlist Software Copyright © 2003-2012 Thomas D. Helle. All rights reserved. www.cabinetcruncher.com		
Project Number:	123					
Quantity of Drawer Boxes & Roll-Out Trays						
Item					Total Qty	
Drawer Boxes					6	
Roll-Out Trays					2	
Production (Rip Length) Quantity						
Front, Side and Back Panels		Panel Width	Lineal Ft	Rip Qty	Rip Length	8
1/2	Russian Birch	6	27 2/3	3.5		
1/2	Russian Birch	3	13 5/6	1.7		
1/2	Russian Birch	8 1/2	14 2/3	1.8		
List of Materials						
Thick	Type	Bd Ft	Sheets	Cost	Notes	
1/2	Russian Birch		1.27	\$50.93		
1/4	Russian Birch		1.07	\$32.20		



Project Cost

- This section summarizes the total material cost, and provides optional criteria for you to establish other costs associated with the project such as production labor, finishing, delivery, installation, etc. You can change the cost item descriptions and their associated costs based on your preferences.

Project Cost					
Item	Labor		Other Costs		Sub-Total
	Rate	Qty			
Materials					\$172.86
Hardware					\$0.00
Production Labor	\$50.00	8.0			\$400.00
Finishing	\$50.00	8.0			\$400.00
Delivery	\$50.00	2.0			\$100.00
Installation	\$50.00	2.0			\$100.00
					\$0.00
					\$0.00
					\$0.00
					\$0.00
Average Cost per Sq Ft:	\$35.72			Total Project Cost:	\$1,172.86

Notes (Optional)

- This section provides space for project notes.

Project Cost					
Item	Labor		Other Costs		Sub-Total
	Rate	Qty			
Materials					\$172.86
Hardware					\$0.00
Production Labor	\$50.00	8.0			\$400.00
Finishing	\$50.00	8.0			\$400.00
Delivery	\$50.00	2.0			\$100.00
Installation	\$50.00	2.0			\$100.00
					\$0.00
					\$0.00
					\$0.00
					\$0.00
Average Cost per Sq Ft:	\$35.72			Total Project Cost:	\$1,172.86
Notes					

Project Cutlist

- This section compiles a complete cutlist for all drawer boxes and roll-out trays for your entire project.
- You can use the filters in each column to sort the components based on your preferences.

<i>Project Cutlist</i>						
COMPONENT ID	COMPONENT NAME	WIDTH	LENGTH	QTY	MATERIAL THICK	MATERIAL TYPE
1-1	Front Panel	6	20	1	1/2	Russian Birch
1-2	Back Panel	5 1/2	20	1	1/2	Russian Birch
1-3	Side Panels	6	22	2	1/2	Russian Birch
1-4	Bottom Panel	19 7/16	21 3/4	1	1/4	Russian Birch
2-1	Front Panel	4	20	1	1/2	Russian Birch
2-2	Back Panel	3 1/2	20	1	1/2	Russian Birch
2-3	Side Panels	4	22	2	1/2	Russian Birch
2-4	Bottom Panel	19 7/16	21 3/4	1	1/4	Russian Birch
3-1	Front Panel	6	18 1/4	4	1/2	Russian Birch
3-2	Back Panel	5 1/2	18 1/4	4	1/2	Russian Birch
3-3	Side Panels	6	22	8	1/2	Russian Birch
3-4	Bottom Panel	17 11/16	21 3/4	4	1/4	Russian Birch
4-1	Front Panel	8	16	2	1/2	Russian Birch
4-2	Back Panel	7 1/2	16	2	1/2	Russian Birch
4-3	Side Panels	8	22	4	1/2	Russian Birch
4-4	Bottom Panel	15 7/16	21 3/4	2	1/4	Russian Birch
5-1	Front Panel	7 1/2	12 1/2	3	1/2	Russian Birch
5-2	Back Panel	7	12 1/2	3	1/2	Russian Birch
5-3	Side Panels	7 1/2	22	6	1/2	Russian Birch
5-4	Bottom Panel	11 15/16	21 3/4	3	1/4	Russian Birch
6-1	Front Panel	10	22 3/4	2	1/2	Russian Birch
6-2	Back Panel	9 1/2	22 3/4	2	1/2	Russian Birch
6-3	Side Panels	10	22	4	1/2	Russian Birch
6-4	Bottom Panel	22 3/16	21 3/4	2	1/4	Russian Birch